

Progress along US Highway 12

Phase 1 – COMPLETED - July 2004 Four-laning McNary Pool to Attalia

Total Project Cost \$10.8 million

Phase 2 – COMPLETED - November 2005 Four-laning SR 124 to McNary Pool

Total Project Cost \$12.1 million

Phase 3 – COMPLETED - September 2007 Four-laning Attalia Vicinity

Total Project Cost \$16.0 million

Phase 4 – COMPLETED - February 2010 Wallula Junction to Walla Walla Corridor Study

Total Project Cost \$5.1 million

Phase 5 – COMPLETED - February 2010 Attalia Vicinity to US 730 - Preliminary Design Only

Total Project Cost \$0.8 million

Phase 6 – COMPLETED - July 2010 Four-laning Frenchtown Vicinity to Walla Walla

Total Project Cost \$51.6 million

US 12/SR 124 Intersection - COMPLETED May 2012 Build new interchange at US 12 and SR 124 Build new overpass at Humorist Road

Total Project Cost \$21.3 million

Finish what we started

Phase 7 – FULLY FUNDED Nine Mile Hill to Frenchtown Vicinity

Estimated Project Cost \$134.8 million

(Funded by 2015 Connecting Washington Transportation Funding Package)

Pre-existing Funds \$5.3 million

Estimated Total Project Cost \$140.1 million

Phase 8 – Design and Right-of-Way FUNDED Wallula to Nine Mile Hill

Design and Right-of-Way - Funded \$ 34.0 million

(Funded by 2015 Connecting Washington Transportation Funding Package)

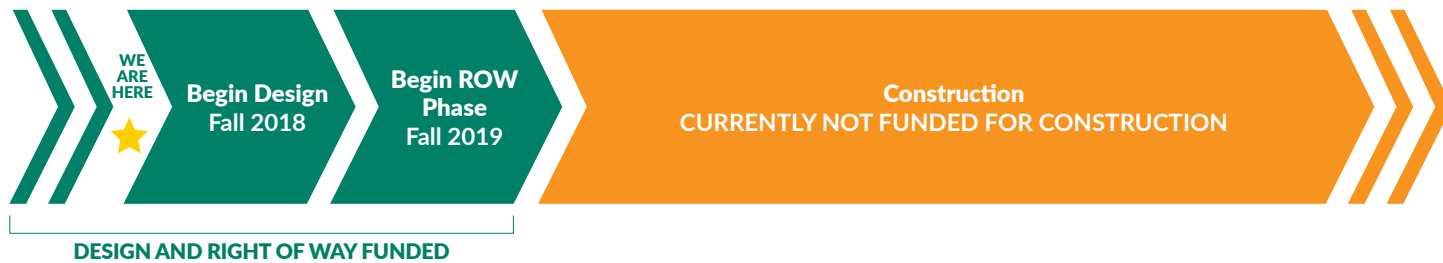
Construction - Unfunded \$161.0 million

Estimated Total Project Cost \$195.0 million



Proposed US Highway 12 near Nine Mile Hill Canyon, looking east to Touchet.

Phase 8 project timeline



For more information: www.wsdot.wa.gov/projects/us12/wallula-nine-mile-hill/

WSDOT Design-Build Office

Bob Hooker, Project Engineer
WSDOT – South Central Region
2809 Rudkin Road, Union Gap, WA 98903
509-577-1760, HookerB@wsdot.wa.gov

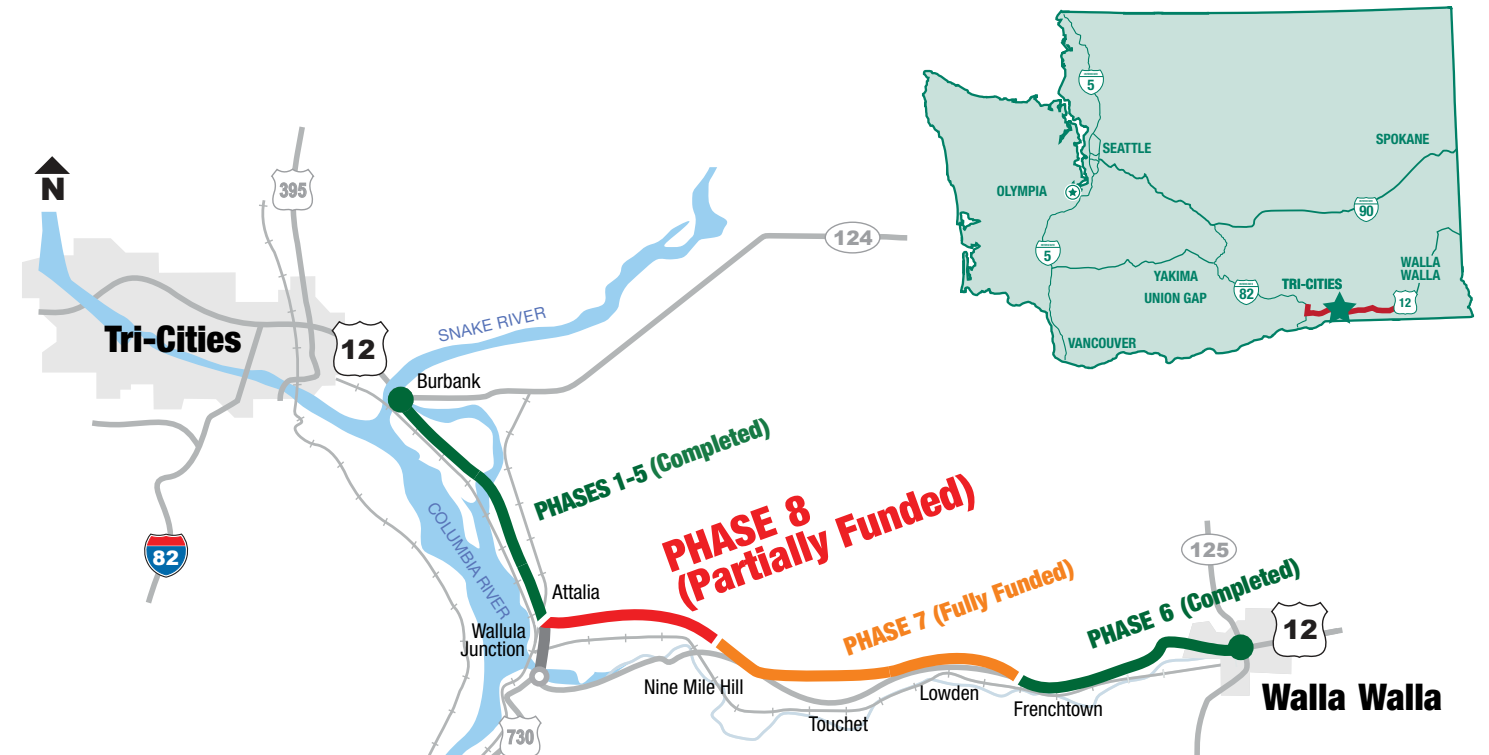
US Highway 12 Coalition

Patrick Reay, Executive Director
Port of Walla Walla/US Highway 12 Coalition
310 A Street, Walla Walla, WA 99362
509-525-3100, pr@portwallawalla.com

Americans with Disabilities Act (ADA) Information

Materials can be provided in alternative formats: large print, Braille, cassette tape, or on computer disk for people with disabilities by calling the Office of Equal Opportunity (OEO) at (360) 705-7097. Persons who are deaf or hard of hearing may contact OEO through the Washington Relay Service at 7-1-1.

Four-laning US Highway 12 Phase 8 – Wallula to Nine Mile Hill



Phase 8 builds upon the \$168.8 million the Legislature has already invested in the US Highway 12 corridor.



Proposed US Highway 12, looking west to the Boise Paper Wallula Mill and the proposed US Highway 12 interchange.

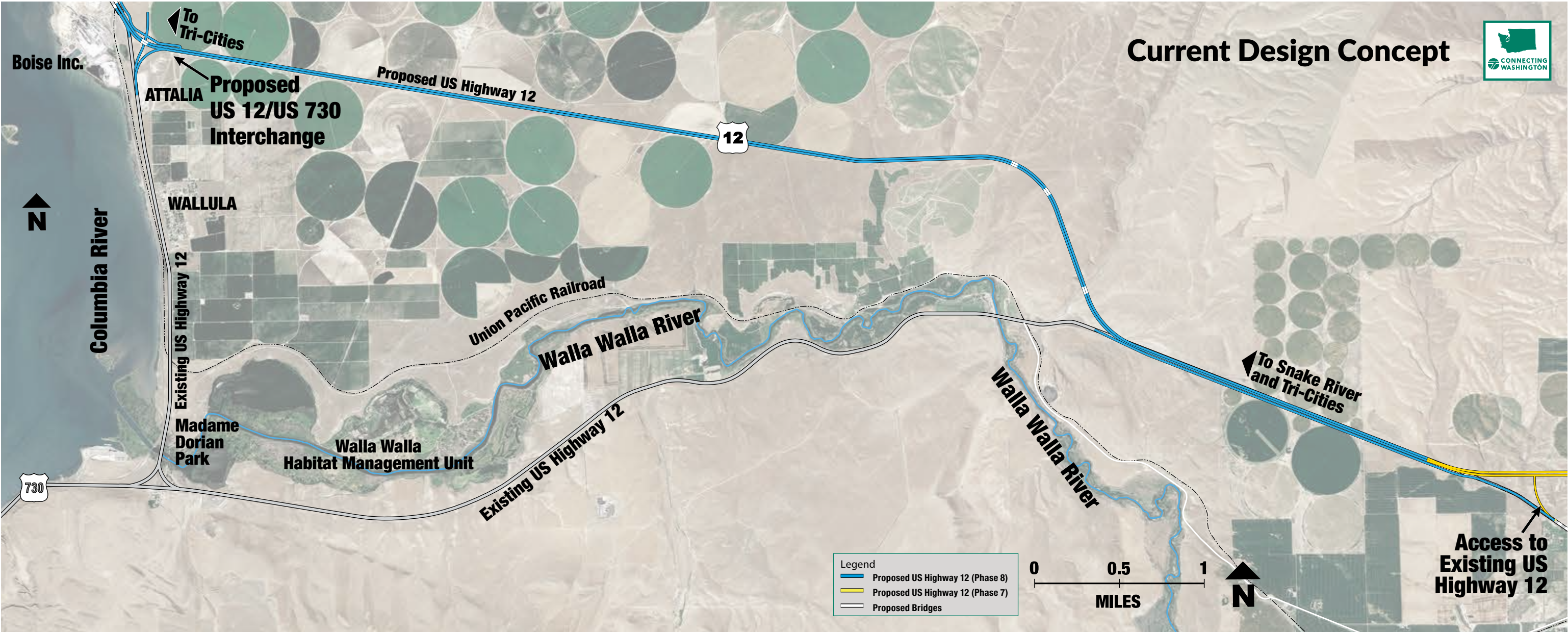
Project benefits

Increased safety: The proposed four-lane highway will improve safety by separating opposing traffic with a median. Grade-separated intersections with local roads will allow access to and from the new roadway.

Reduce congestion: A four-lane highway will improve traffic flow and provide improved passing vehicle movements.

Freight mobility: Commercial trucks make up as much as 12% of traffic on US 12 in this area. Increasing capacity will reduce slowdowns and improve travel time for freight, tourism, recreational, and commuter traffic.

Economic: Once complete, the new highway will provide a new four-lane facility between Walla Walla and the western ports and will enhance mobility within the region and state.



Corridor history

Since 2003, WSDOT and the US Highway 12 Coalition have made significant progress toward four-laning existing US Highway 12 from the Snake River (near Burbank) to Walla Walla. After the 11-mile Phase 7 project is complete, approximately 10 miles of two-lane, undivided existing highway will remain between Boise Inc. (near Attalia) and Nine Mile Hill. Completing the proposed US Highway 12 corridor will benefit the residents, businesses, and traveling public through improved safety, capacity, and mobility. In addition, the regional transportation system between the Tri-Cities and Walla Walla will be able to better support the agricultural, viticultural, and other freight traffic critical to Eastern Washington’s economic vitality.

Environmental status

WSDOT and the Federal Highway Administration completed the National Environmental Policy Act (NEPA) process with the issuance of an Environmental Assessment in February 2010 and a Finding of No Significant Impact in September 2010. These NEPA documents explain the process used to determine the selected alternative for Phases 7 and 8.

Project funding

In 2015, the Washington State Legislature provided funds for the Phase 8 roadway design and right-of-way acquisition as part of the Connecting Washington transportation funding package. Design and right-of-way acquisition are scheduled to begin in fall 2018 and fall 2020, respectively. WSDOT and the US Highway 12 Coalition will continue to seek funding for construction.

Stakeholders

- US Highway 12 Coalition
- Port of Walla Walla
- Local businesses and employees
- Freight and agriculture industries
- Property owners and residents
- Local government agencies
- Environmental regulatory agencies
- Walla Walla Valley Metropolitan Planning Organization
- Confederated Tribes of the Umatilla Indian Reservation
- Utility companies